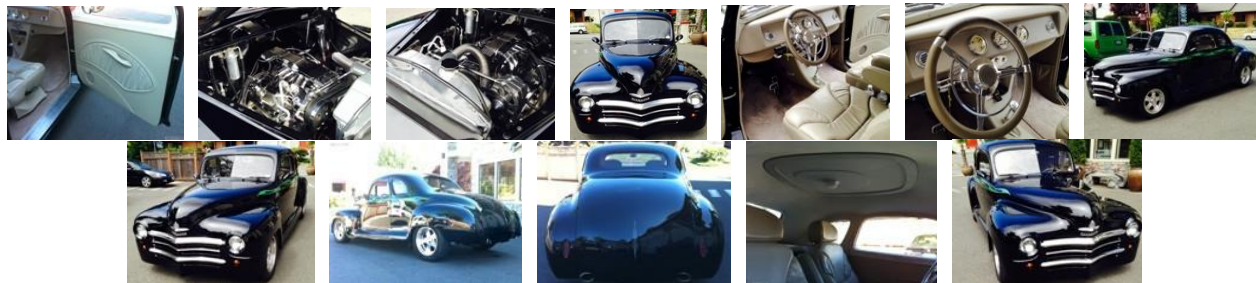




1948 Plymouth Business Coupe



This custom 1948 Plymouth is a unique Street Rod that will have you falling in love. If you are looking for a new ride that you won't see at every car show then look no further. This business coupe is coated in slick Black paint with thin Green flames running down the side. When it comes to the exterior trim, this car has zero problems. All of the chrome and emblems are in place and in great condition. The frenched lights look amazing and just as they should. The car rides on custom Boyd Coddington wheels with fresh Dunlop radial low profile tires. The car is a great driver and starts up everytime. It has been kept up with religiously and never misses a tune up. To give you an idea of how well it is cared for, in the past year it has received an alignment, new gas shocks, new brake shoes, new brake pads, new front calipers, computer checkup, new tires, new aluminum heads from Summit Racing, new spark plugs and wires, both front fenders, repainted hood and grill, and all fluids replaced. You don't have to worry about any corners being cut on this custom. The interior is finished out in Beige leather and is extremely comfortable. It has plenty of room so any sort of short or long term driving is no problem. This car runs very well and starts up every time.

CUSTOMIZATION
All seams filled (weld and lead)
Custom flame graphics and pin striping
Trim and handles removed
Hagan gas door
Parking lights frenched
Tail lights frenched
Headlights frenched
Flat dash panel
Cowl vent filled
Vent windows removed
V-butt windshield
Custom front and rear pans – no bumpers

LUXURY FEATURES
A/C, heat, defrost (Hot Rod Air) lighted controls
Cup holders in console
Bucket seats w/fold down arm rests
Stereo, single CD player (5 speakers-AMP)
Tilt column
Cruise control
Power brakes
Power steering – remote fill
Remote entry
Power doors
Power windows

ACCESSORIES
Lokar shifter and hood-trunk release
Under dash E-Brake control
Classic Instruments (Quad gauges w/tachometer)
Flaming River polished column
Colorado custom steering wheel
Dakota Cruise control
Billet specialties gas pedal, interior lights
Boyd Coddington "Stingray" wheels, 16" front, 17" rear

ENGINE
1989 Corvette 350 TPI motor
Polished; Alternator, compressor, dryer, valve covers and power steering remote filler.
Griffin aluminum radiator
Remote transmission cooler
1989 Corvette 700-R4 transmission
Street and Performance computer street rod wiring harness
Street and Performance polished TPI w/S&P modifications
Block Hugger Headers
Aluminum angle plug heads (new from summit racing \$1100)

CHASSIS
Powder coated chassis
Tubular transmission cross member
Rear sway bar
Gas shocks rear
Ford 8.8 posi-traction rear, 373 ratio, drum brakes
Posie rear leaf Springs
Gas shocks front
Tubular A-arms
Mustang GT springs
Power mustang II rack
Front disc brakes
Fat Man front frame stub

Add this custom to your collection for \$38,500.00!